



Our Course
Guide





Course Guide 22/23

City of Westminster
College

Contents

Group Principal's Message.....	2
Vice Principal's Message.....	3
Raising the Bar - Why you should study at CWC	4-5
College campuses	6-9
Our facilities.....	10-11
Qualifications explained	12
Choosing the right course level	13
Your study programme	14-15
Sign me up! - how to apply	16-17
Introduction to courses	18
Course navigation	20-27
Apprenticeships	28-29
A levels and Science	30-35
Back to Work and Workforce Development	36-39
Business and Accounting.....	40-45
Construction, Engineering and the Built Environment.....	46-55
Creative Industries and Digital	56-67
English, Maths and Skills.....	68-71
Health, Wellbeing and Care.....	72-81
Lifelong learning	82-87
Supported learning	88-91
Teacher training	92-95
Short courses	96-97
Financial support	98-99
Open events	100
Student support	101-105
Student Matters	106-107
Preparing you for the world-of-work.....	108-109
Index.....	110-111
Hire our facilities.....	112

Disclaimer

Correct at the time of going to print. City of Westminster College reserves the right to withdraw or amend any course, service or facility due to circumstances beyond the College's control. These circumstances may include (but are not limited to) withdrawal or reduction in funding, change of law, amendments to government policy, industrial action, departure of essential personnel, lack of demand and equipment failure. This guide is for general guidance and information only and does not form part of any contract.

A warm welcome

Studying here

City of Westminster College is part of the United Colleges Group, one of the largest providers of post 16 education and training in Greater London. We are a multi-site institution with a strong community presence, which offers open and inclusive access to all our students. We are proactive in the economic, social and business life of the communities we serve.

With five sites spread across Westminster, Camden and Brent, United Colleges Group is well placed to help improve the life chances of every person who walks through our doors and joins us.

Our aim is to try and help our students, to whether younger or older, achieve their ambition. That ambition may well be to progress to university or move into a well-paid job or start a new career path.

Our teachers are attentive and dedicated to our students' needs and we offer the all-round support that every student deserves. All our dedicated staff will ensure our students are stretched academically and students with special educational needs and disabilities

are expertly supported, allowing us to bring out the best in everyone. Regardless of background or starting point or past successes or failures, we ensure that our students excel and achieve their ambition, and we will help grow.

Whilst at college, you may wish to take part in our wide range of enrichment activities which include clubs and societies, sport and physical activities and voluntary work on top of your main course. All aspects of your study will help when you apply to university or pursue a career at the end of your time with us.

The information in this course guide will help you make the right choices. Making the right choice now is essential to your future career. I hope you decide to join us and I look forward to welcoming you.

Best wishes



Stephen Davis

Group Principal and Deputy Chief Executive

Your future starts here

Why choose us



The way we create the student experience at City of Westminster College is based on three main themes that have been developed by our teachers, to formulate a method of working:

- How our teachers develop their art of teaching support by the Science of Education
- How all staff regardless of their role work to create and support a compelling experience for our students
- How we ensure that we are continually making a positive difference to our students.

This method supported by a course offer that covers a broad range of subjects which provide clear progression routes for either school leavers on completion of their GCSEs, or anybody else of any age wishing to return to education, to re-train and upskill. These are grouped into Career Clusters in order to sign post students to the relevant the progression opportunities, and include A-levels and Science, Business and Accounting, Creative Industries and Digital, Engineering, Construction and the Built

Environment, English, Maths and Skills, English Speakers of Other Languages (ESOL); Health Well-Being and Care.

Our campuses offer impressive learning environments to deliver all qualifications, with industry standard resources in order to replicate the work place, to prepare our students for employment. As well as the qualifications, we have a strong focus on the development of the individual, to help build our students to become both work and life ready. Our students will receive all the support they need to reach these goals, whether it be financial, personal or academic.

We are confident you will have a very positive experience with us at City of Westminster College and look forward to welcoming you through our doors.

Best wishes

James Wilson
Deputy Principal

Raising t

BAR

Why you
should study
at CWC



"We're passionate about your success and in providing you with outstanding teaching and learning, in a nurturing and encouraging environment."

Over 400 career-focused courses to choose from

With so much choice we're confident we have a course to help you achieve your career ambitions

Get award-winning support every step of the way

Accessible to you from day one to the day you leave, our support teams hold Matrix accreditation in recognition of the high-quality of support and guidance we give our students

We'll help you get work ready

Our dedicated Work Experience team help you secure work placements most relevant to your future career

You'll be taught by tutors with industry experience

You'll be taught by expert staff who are active in their industries and bring current knowledge into the classroom so you're learning is always relevant to employers' needs

Partnerships with successful universities

Our partnerships with local universities such as Westminster University, UAL and Birkbeck College allow you to enter the final year of a degree programme after the completion of a foundation degree or HND

the

City of Westminster
College

Learn in facilities mirroring real-work environments

From state-of-the-art photography studies and a purpose-built theatre to an industry-standard motor vehicle workshop, Sport England standard sports hall and an airplane cabin simulation training room, we've recreated real-work environments similar to what you'll encounter when pursuing your career

We work with leading local and national employers

We maintain links with leading employers, so your learning is relevant to the needs of the industry

We're easy to get to

Our campuses are situated in Paddington Green, Maida Vale and King's Cross, each boasting excellent transport links and easy to get to

Kick-start your career with one of our apprenticeships

With high success rates, exceptional employer links, and rated Good by Ofsted, our Apprenticeships are a great way to start your career straight away

The only UK Microsoft Flagship college

Meaning we're working with leaders from around the world to learn how to make the very best of technology and how it enhances our students' learning

Giving you more than just a qualification

From joining the Student Voice, becoming a student representative or a student governor to joining one of our clubs and societies, and getting on the Student Activity Programme, we help you develop personally, academically, and professionally.



Paddington Green Campus
Paddington Green, London, W2 1NB
020 7723 8826
customer.services@cw.ac.uk

Check-in

@ our Campuses

Paddington Green campus

Our award-winning Paddington Green campus offers a 21st century learning environment with unrivalled modern facilities and learning support. The campus has a wide range of informal and formal teaching and meeting spaces and a large atrium filled with natural light which leads to outdoor terraces - offering spectacular views of the London skyline.

The building is filled with state-of-the-art facilities including photography studios and a dark room, TV and radio studios, a dance studio and a purpose-built theatre. In addition to this, the college also has a range of Mac editing suites, an industry-standard motor vehicle workshop, a Sport England standard sports hall and an aeroplane cabin simulation training room.

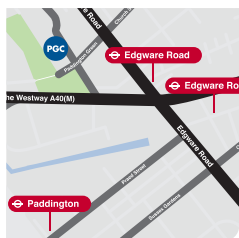
Courses available at this campus include:

- A Levels
- Apprenticeships
- Art, Design and Photography
- Building Services Engineering
- Business and Accounting
- Computing and ICT
- Construction and the Built Environment
- Health and Social Care
- Higher Education and Access courses
- Media
- Motor Vehicle Repair and Maintenance
- Performing Arts
- Public Services
- Science
- Sound and Music
- Sport
- Teacher Training
- Travel and Tourism

The campus is conveniently located close to Edgware Road, Marylebone and Paddington stations and served by major bus routes: 6, 16, 18, 98, 332 and 414. There are extensive motorbike and bicycle parking facilities including the Santander bike hubs.

Car and bicycle parking

All car parking is strictly limited to students with registered mobility issues and must be arranged in advance, blue badge parking is not guaranteed as there are limited spaces available. All our campuses have ample parking facilities for bicycles. However all bikes are parked at the owner's risk and we strongly advise securing bikes/motorbikes with a suitable lock.



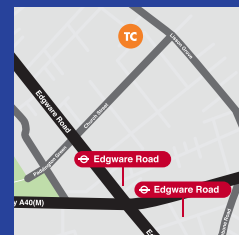
The Cockpit

The Cockpit is a college owned purpose-built commercial theatre in Marylebone, Central London. Various spaces are available to hire with up to 220 seats for shows, rehearsals, photo or film shoots, auditions, band practice, seminars or conferences.

The Cockpit is a theatre of ideas and disruptive panache, offering a rich and varied programme of new writing, jazz, dance, opera, comedy, world music, musical theatre, audience discussion, and family theatre.

The Cockpit also runs Theatre Maker - a community of classes, scratch nights, workshops, readings, advice sessions and performance platforms curated to support and offer opportunity to new and developing theatre makers. To hire out or to find out more about events and performance listings, please visit: thecockpit.org.uk

Nearby stations are Edgware Road, Marylebone and Paddington. Bus routes include: 6, 16, 18, 98, 332 and 414.



Maida Vale campus
129 Elgin Ave, London W9 2NR
020 7723 8826
customer.services@cwc.ac.uk

Maida Vale campus

Set in a charming period building in the vibrant neighbourhood of Maida Vale, this campus opened in September 2017. Offering a mix of informal and formal teaching and meeting spaces, you'll be captivated by its light, warm and welcoming environment.

Facilities include a multi-sensory room for students with special educational needs, outdoor terraces and bespoke teaching facilities.

Courses available at this campus include:

- Business Development
- English for Speakers of Other Languages (ESOL) courses
- Specialist provision for those with Learning Disabilities and Difficulties (LDD).

We also provide advice and support for those seeking employment at the Employability Centre. Our specialist staff will also be able to assist individuals looking to get back into work with a series of focused short training courses.

The campus is close to Maida Vale, Westbourne Park and Warwick Avenue stations, and served by various bus routes including 6, 16, 31, 36, 98, 187, 328 and 414.





King's Cross campus (specialist construction skills centre)

The King's Cross campus is a training centre for the construction sector in the King's Cross regeneration zone in London. Home to industry-standard workshops for carpentry, electrical installation, construction and plumbing, you'll find our King's Cross campus offers a friendly atmosphere complemented by great teaching.

The centre offers training programmes including apprenticeships for companies and courses for individual students.

Courses available at this campus include:

- Basic Construction Skills
- Electrical Installation
- Plumbing
- Carpentry
- And short courses in Construction Skills for Adults.

The campus is close to underground and rail stations and is served by major bus routes. It also has extensive motorbike and bicycle parking facilities including the Santander bike hubs.

The campus is a 12-minute walk from King's Cross St Pancras station.

King's Cross St Pancras Underground station links six London Underground lines – Circle, Piccadilly, Hammersmith and City, Northern, Metropolitan and Victoria.





Our Fantastic FACILITIES

From industry-standard workshops, a purpose-built theatre and an airplane cabin simulation training room, to learning resource centres and dedicated study spaces, you have everything you need for a great student experience.

Our subject-related facilities include:

- Fully equipped science labs
- Industry-standard motor vehicle, construction and engineering workshops
- State-of-the-art theatre, and TV and radio studios
- Specialist photography, film and animation equipment and studios
- Fully working 'mock-up' aeroplane cabin equipped with a full range of cabin functions, PA capability, cabin temperature and lighting control, in-flight cabin service set, BCF and oxygen cylinder, safety emergency demo sets and check-in desk.

And that's not all!

- Every campus is home to its own Learning Resource Centre (LRC), which provides space for individual or group study, PCs, printing facilities, books for study and recreational reading and friendly staff to help you make the most of the facilities available.
- Our on-site canteen offers a wide selection of hot and cold food, and a Costa Coffee providing snacks and drinks
- A multi-faith room is available for reflection and prayer
- Learning Zones that provide drop-in support
- We have sports facilities including a gym based at the Paddington campus.

Qualifications

EXPLAINED

Whether you're better at completing coursework with the ambition of going to university or you're more hands-on and like training on-the-job, we offer a diverse and exciting range of vocational and practical courses for you to choose from.

Access to HE Diplomas

Our Access to HE Diploma courses are accredited by the Open College Network London. These courses run for one year and are designed for adults who have previously missed opportunities to gain academic qualifications. You do not need specific qualifications to get onto an access course but you must be 19 years or over at the start of the course and be committed to studying intensively.

Apprenticeships

An apprenticeship is a job combined with training so you can earn a wage while you learn and pick up recognised qualifications. Most training takes place both at your workplace

and in College, but in some cases all training is provided in the workplace, with tutors visiting you. In order to an apprenticeship you must already be ok in suitable employment or have a firm offer of employment within your chosen occupation.

NVQs

NVQs are vocational awards achieved through assessment and training, usually in the workplace. These are competence-based qualifications where people learn practical work-related tasks to help develop the skills and knowledge to increase their effectiveness.

BTEC, UAL, NCFE, CACHE, City & Guilds, IMI Certificates/Diplomas

These are courses with a vocational focus recommended for people interested in a particular area of study e.g. performing arts or Information technology. They are coursework-based qualifications with very few or no exams and are continually assessed in order for you to review and improve your performance.

Please note BTEC Level 3 Extended Diplomas are delivered as two one-year programmes:

Year 1 – Subsidiary Diploma

Year 2 – Diploma/Extended Diploma

Students are expected to satisfactorily complete the Subsidiary Diploma programme prior to being considered appropriate for the Diploma or Extended Diploma.

HNCs, HNDs & Foundation Degrees

Higher National Certificates (HNCs) and Higher National Diplomas (HNDs) are university level qualifications, designed to give you specialist knowledge in your chosen field. Foundation Degrees are equivalent to the first two years of a degree and combine vocational and academic study. These, as well as our HNC and HNDs can lead to top-up degrees at a partner or participating university.

Level UP

Choosing the course level that's right for you

Deciding what course is right for you is important and it's easy to get overwhelmed by all the different levels. We've put together a quick guide to help you understand the different levels available, what they mean and what their entry requirements are.

ENTRY LEVEL

If you have no formal qualifications then this could be a good place to start. Our ESOL courses are at Entry Level and are designed to give you an understanding of the English Language in preparation for a higher level course.

LEVEL 2

If you have 4 GCSEs at grade 3/D or above or a Level 1 qualification, you could apply for a Level 2 course. Once completed, Level 2 courses are the equivalent of 4-5 GCSEs at grade 4/C or above.

LEVEL 1

Level 1 courses provide a general introduction to skills, tasks and knowledge. If you have at least 2 GCSEs at grade 2/E or above or an Entry Level qualification, then a Level 1 qualification might be the right level for you.

LEVEL 4 AND ABOVE

These courses fall into the category of Higher Education and are equivalent to courses taught at universities. They help you gain specialist knowledge and understanding of a specific subject.

LEVEL 3

Level 3 courses will further develop your knowledge and understanding of your chosen subject area. They generally last two years and enable you to earn UCAS points to go onto university or into employment. If you have at least 4 GCSEs at grade 9-4/A*-C or a Level 2 qualification then you should be aiming at studying a Level 3 course.

A photograph of two young women with long brown hair, wearing grey sweaters, sitting at a desk in a classroom or library. They are looking down at their work. The woman on the left is writing in a notebook, and the woman on the right is holding a blue pen. In the background, there are posters on the wall and a window.

Your study programme

More Than Just a Qualification



In today's competitive market, we want to ensure you stand out from the crowd. Your study programme is specially designed to help give you the best possible start to your career.

Alongside your main qualification, you'll study English and Maths, complete work experience and take part in enrichment activities to improve your personal and employability skills.

Your study programme is made up of four key parts which you must pass:

1. Your main qualification (in the subject area of your choice)

You will still study the same post-school qualifications for your particular subject area (i.e. you'll go in at level 2 and work up to level 3 in the traditional way). You could be training to become a hairdresser or taking an engineering study programme to become an electrician.

2. Development of employability skills and relevant work experience

When it's time for you to apply for a job after college you will be well prepared with a great CV, real-life work experience and solid interview techniques. We'll help you navigate the job market and overcome any interview process nerves.

3. Both personal and professional development

Want to know how you're progressing? We will assign you a personal development tutor to support you through your time and track your progress.

4. The study of English and Maths

Employers will want to know that your level of English and Maths are of a sufficient level regardless of the career you embark on. For example if you're an aspiring construction worker, how to calculate distances and estimate or if you would like to work in catering and hospitality, you'll need to know how to handle money and write emails. The level of numerical knowledge you need will vary depending on your chosen subject (accounting students will learn at a higher level for example).

Do you know?

One of the most basic qualifications employers look for is English and Maths, and many will overlook applicants that don't have a pass in these. You'll also need them to progress in Further Education or study at degree-level.

Sign me up!

HOW TO APPLY

We want to ensure you understand the application process and what to expect once you've applied for a course. Comprising of a few simple steps outlined below, you'll find applying to study with us couldn't be easier.

Choose your course

Have a look through this course guide or go to cwc.ac.uk/courses to view all courses we have on offer. Tip: Check the entry requirements so you know what you'll need to get onto the course of your choice.

Come in and see us!

If you need help deciding, come along to one of our open events and see for yourself why we're the right choice for you. (See page 100.)

Apply on time!

The sooner you apply, the more chances you have of securing a place on your first-choice course. When you're ready, find your course at cwc.ac.uk/course, click '**Apply**' and complete your application.

Confirmation

Once you've submitted your application, we'll send you an email to confirm we've received it.

Attend an interview

We'll review your application to make sure that you meet the entry requirements. If so, we'll invite you to an interview or make an offer.

Enrol

You'll be invited to enrol at the City of Westminster College in August 2022, after which, you'll become an official student of the College.



**"The College
has a really
positive vibe,
I really enjoy
my time spent
on campus and
i've made really
good friends"**

**If you have any questions or would like more
information about our application process,
please call our Customer Services team, on:
020 7723 8826 or email
customer.services@cw.ac.uk**

On course for

SUCCESS

We pride ourselves on running inspiring and engaging courses, which develop your creative thinking and provide you with the skills and knowledge needed to succeed in the world-of-work.

Our courses are designed with your employability in mind, from work placements and real-life projects to facilities mirroring industry, and provide an excellent launchpad for your future career.

We offer a range of full-time, part-time and short course options for you to choose from.

School leavers (16-18 year olds)

Courses are all full-time and are offered from level 1 to level 3. They create a perfect pathway into university or employment.

Apprenticeships

Work for an employer, earn a salary and achieve qualifications all while gaining valuable work skills and experience.

Adult learners

As well as full-time level 1-3 courses, we also have a range of part-time courses to fit around your life commitments.

Short Professional

These are short courses designed to help you upgrade your skills and improve your job prospects.

Higher Education

We have degree-level courses equivalent to the first and second year of a degree with the option to top-up to a full degree.



Course Guide N

**Easily find the page of the courses you're interested in,
listed here in alphabetical order**

Course Title	16-18	Adult	Full Time	Part Time	Short Course	Higher Education	Page
AAT Level 2 Foundation Certificate in Accounting (Day) (Sept and Jan start)		•		•			42
AAT Level 2 Foundation Certificate in Accounting (Evening) (Sept and Jan start)		•		•			42
AAT Level 3 Advanced Diploma in Accounting (Day & Evening) (Sept & Jan start)		•		•			42
AAT Level 4 Professional Diploma in Accounting (Day & Evening)		•		•			42
Access H.E Diploma in Science		•					34
Access to H.E Diploma in Business		•					44
Access to H.E Diploma in Business	•	•	•				44
Access to H.E Diploma in Science		•		•			34
Access to Law	•	•	•				44
Adobe Premiere Pro (Advanced)					•		97
Adobe Premiere Pro (Intermediate)					•		97
Advanced Photography					•		97
A Level Art	•	•	•				32
Art History - An Introduction					•		97
Art History - Movements and Moments					•		97
Beginners Fashion Design					•		97
Beginners Photography					•		97
Bookkeeping Level 1 (Evening) (Sept & Jan start)		•		•	•		42
BTEC HNC in Civil Engineering		•	•			•	50
BTEC HND in Business		•	•			•	44
BTEC Level 1 Diploma for IT Users	•	•	•				60

Navigator



Course Title	16-18	Adult	Full Time	Part Time	Short Course	Higher Education	Page
BTEC Level 1 Diploma in Applied Science	•	•	•	•			34
BTEC Level 1 Diploma in Sport and Active Leisure	•	•	•				78
BTEC Level 2 Diploma for IT Users	•	•	•				60
BTEC Level 2 Extended Certificate in Applied Science	•	•	•				34
BTEC Level 2 Extended Certificate in Business	•	•	•				42
BTEC Level 3 Diploma in Civil Engineering	•	•	•				44
BTEC Level 3 Diploma/Extended Diploma for ICT Practitioners	•	•	•	•			60
BTEC Level 3 Diploma/Extended Diploma in Business with specialist pathways	•	•	•				42
BTEC Level 3 Extended Diploma in Applied Science	•	•	•				34
BTEC Level 3 Extended Diploma in Civil Engineering	•		•				50
BTEC Level 3 Foundation/Extended Diploma in Engineering	•		•				52
BTEC Level 3 National Diploma in Building Services Engineering	•	•		•			50
BTEC Level 3 National Diploma in Engineering	•		•				52
BTEC Level 4 HNC in Civil Engineering	•				•		50
BTEC Level 4 HND in Business	•	•			•		44
Building Services Design Technician	•	•					97
Business Administrator Level 3	•	•					44
Business Studies	•	•	•				32
CACHE Level 1 Diploma in Health & Social Care	•	•					74
CACHE Level 2 Extended Diploma in Health & Social Care	•	•					74

Course Guide N

**Easily find the page of the courses you're interested in,
listed here in alphabetical order**

Course Title	16-18	Adult	Full Time	Part Time	Short Course	Higher Education	Page
CACHE Level 3 Certificate/Diploma in Health & Social Care	•	•					74
City & Guilds Level 1 Certificate in Construction	•	•	•				48
City & Guilds Level 1 Diploma in Electrical Installation	•		•				48
City & Guilds Level 1 Diploma in Plumbing Studies	•	•	•				48
City & Guilds Level 1 Diploma in Travel and Tourism	•	•	•				80
City & Guilds Level 1 Diploma in Vehicle Maintenance	•	•	•				54
City & Guilds Level 2 Diploma in Electrical Installation	•	•	•				48
City & Guilds Level 2 Diploma in Plumbing Studies	•	•	•				48
City & Guilds Level 2 Diploma in Travel and Tourism	•	•	•				80
City & Guilds Level 2 Light Vehicle Maintenance and Repair Principles	•	•	•				54
City & Guilds Level 3 Light Vehicle Maintenance and Repair Principles	•	•	•				54
Close Protection		•			•		38
Closed Circuit TV (CCTV)		•			•		38
Construction Multi-skills	•	•					91
Construction Skills - CSCS Card		•			•		38
Digital Citizen		•			•		38
Diploma in Business Administration Level 2-3		•					39
Diploma in Coaching and Mentoring Level 4		•					39
Diploma in Customer Service Level 2-3		•					39
Diploma in Learning & Development Level 3	•						39

lavigator



Course Title	16-18	Adult	Full Time	Part Time	Short Course	Higher Education	Page
Diploma in Management Levels 3-5		•					39
Diploma in Team Leading Level 2-3		•					39
Door Supervision		•			•		38
English for Work		•			•		38
English Language	•	•	•				32
English Literature	•	•	•				32
ESOL For Adults		•		•			86
ESOL for Young Learners	•		•				86
Event Stewarding		•			•		38
Functional Skills English		•					70
Functional Skills Mathematics		•					70
Games Design		•		•	•		97
Garment Construction					•		97
Gateway Diploma in Skills for Music and Music Technology	•	•	•				66
GCSE Biology		•		•			34
GCSE Chemistry		•		•			34
GCSE English		•					70
GCSE Maths		•					70
History	•	•	•				32
IELTS			•				84

Course Guide N

**Easily find the page of the courses you're interested in,
listed here in alphabetical order**

Course Title	16-18	Adult	Full Time	Part Time	Short Course	Higher Education	Page
Intermediate Photography					•		97
Introduction to Photoshop					•		97
Law	•	•	•				32
Learning for Life and Work - Learning for Living	•	•	•				90
Level 1 Diploma in Art & Design	•	•	•				58
Level 1 Diploma in Creative Media Production and Technology	•	•	•				62
Level 2 Diploma in Art & Design	•	•	•				58
Level 2 Diploma in Creative Media Production and Technology	•	•	•				62
Level 2 Diploma in Photography	•	•	•				58
Level 3 Applied General/Extended Applied General Diploma in Art & Design (4 pathways - Photography, Graphics and 3D, Fine Art and Fashion, and Textiles)		•	•	•			58
Level 3 Award in Education and Training		•	•				94
Level 3 Diploma/Extended Diploma in Creative Media Production	•	•	•				62
Level 3 Foundation Diploma in Art & Design	•	•	•				58
Level 5 Diploma in Education and Training		•		•		•	94
Media Studies	•	•	•				97
Microsoft Office - Excel		•		•	•		97
Microsoft Office - PowerPoint		•		•	•		97
Microsoft Office - Word		•		•	•		97

Navigator



Course Title	16-18	Adult	Full time	Part Time	Short Course	Higher Education	Page
NCFE Level 1 Diploma in Uniformed Services	•		•				76
NCFE Level 2 Certificate in Cabin Crew		•		•	•		97
NCFE Level 2 Certificate in Uniform Services	•		•				76
NCFE Level 2 Diploma in Sport	•	•	•				78
NCFE Level 3 Certificate in Gym Instructing and Personal Training	•	•	•				78
NCFE Level 3 Diploma/Extended Diploma in Sport and Physical Activity - Sport and Exercise Science Pathway	•	•	•				78
NCFE Level 3 Diploma/Extended Diploma in Sport and Physical Activity - Sport Coaching Pathway		•	•	•			78
NCFE Level 3 Diploma/Extended Diploma in Travel and Tourism	•	•	•				80
NCFE Level 3 Diploma/Extended Diploma in Uniformed Services	•		•				76
Politics		•	•	•			32
Preparation for IELTS (April start, Evening)		•		•			84
Preparing for Adulthood	•	•	•				91
Preparing for Work	•	•	•				91
Psychology	•	•	•				32
Rigging for the Entertainment Industry	•	•					97
Skills for Work	•	•	•				91
Social Media Marketing		•		•	•		97
Sociology	•	•	•				32
Stepping Stones		•			•		38

Course Guide N

Easily find the page of the courses you're interested in,
 listed here in alphabetical order

Course Title	16-18	Adult	Full Time	Part Time	Short Course	Higher Education	Page
Supported Internship	•	•	•				2
TAQA Assessor Award Level 3		•					39
TAQA IQA Award Level 4		•					39
Textiles: Printed and Surface Pattern Design					•		97
UAL Level 2 Diploma in Music Production and Performance	•	•	•				66
UAL Level 2 Diploma in Performing & Production Arts	•	•	•				64
UAL Level 3 Diploma/Extended Diploma in Performing and Production Arts	•	•	•				64
UAL Level 3 Diploma/Extended Diploma in Music Production	•	•	•				66

lavigator





WE'VE MASTERED THE APPRENTICE

As an apprentice you'll get the benefits of studying with a well-established London college while working employer.

An apprenticeship is a great alternative to full-time study. Combining practical training in a real job with study towards a nationally recognised qualification, harness the benefits of earning while you learn from day one.

Why choose an apprenticeship?

- Earn while you learn
- Get paid holidays
- Gain nationally recognised qualifications
- Learn job-specific skills
- Benefit from progression opportunities
- Increase your future earning potential
- Learn at a pace suited to you
- Get support from a workplace mentor

Am I eligible?

Apprenticeships are open to anyone aged 16 or above living in the UK and not in full-time education and employed.

If you're not a UK citizen, as long as you have the right to work in the UK and the Apprenticeship works within the lines

of your visa you can pursue an Apprenticeship.

There are four main Apprenticeship levels:

Intermediate Level Apprenticeships - Level 2
(equivalent to GCSEs)

Advanced Level Apprenticeships – Level 3
(equivalent to A levels)

Higher Apprenticeships – Levels 4, 5
(equivalent to Foundation degree and above)

Degree Apprenticeships – Levels 6, 7
(equivalent to Bachelor's or Master's Degree)

What qualifications do I need?

Level 2 (intermediate) equivalent to GCSEs and you must be 16 years old or over. Employers may ask for a demonstrable interest in the area covered by the apprenticeship as well as the ability to complete it

Level 3 (Advanced) is considered equivalent to A-levels, at this level, employers will typically seek GCSEs, usually three



ART OF SHIPS

or more, particularly in English and Maths. Relevant experience will also be useful. Level 4 (higher) considered equivalent to a foundation degree, employers will look for GCSEs and level 3 qualifications, such as A levels, BTEC or equivalents. It's at this point where experience in a relevant the subject is also desired.

All Apprenticeship candidates will be required to undertake Maths and English assessments as part of the onboarding process and admission onto the course is subject to meeting the entry criteria.

What's next?

If you're interested in an apprenticeship, you'll need to find a suitable job and an employer willing to support you through it.

For vacancies, visit "Find an Apprenticeship" findapprenticeship.service.gov.uk and register your details. You can also contact your local council.

How long does an apprenticeship last?

Apprenticeships vary in length depending on the qualification, level, sector and your previous experience. They can be from one year to up to four years.

We offer apprenticeships at intermediate, advanced and higher levels in various subjects:

- Level 2 Accounts or Finance Assistant (Paddington)
- Level 2 Bricklayer (Willesden)*
- Level 2 Carpentry & Joinery (Willesden)*
- Level 2 Painter and Decorator (Willesden)*
- Level 2 Interior Systems Installer (Drylining) (Willesden)*
- Level 2 Plasterer (Willesden)*
- Level 2 General Welder (Arc Processes) (Willesden)*
- Level 3 Assistant Accountant (Paddington)
- Level 3 Business Administrator (Paddington)
- Level 3 Civil Engineering Technician (Paddington)
- Level 3 Railway Engineering Design Technician (Paddington)
- Level 3 Building Services Design Technician (Paddington)
- Level 3 Advanced Carpentry & Joinery (Willesden)*
- Level 3 Gas Engineering Operative (Willesden)*
- Level 3 Refrigeration Air Conditioning and Heat Pump Engineering Technician (Willesden)*
- Level 3 Installation Electrician / Maintenance Electrician (Willesden)*
- Level 3 Plumbing and Domestic Heating Technician (Willesden)*
- Level 4 Construction Site Supervisor (Paddington)
- Level 4 Building Services Engineering Technician (Paddington)

To find out more about becoming an apprentice, contact the Apprenticeships team:

Email: apprenticeships@cnwl.ac.uk

Phone: 020 8208 5281 (College of North West London)

Phone: 0207 258 5658 (City of Westminster College)

*The Willesden campus is part of our sister college, the College of North West London



Welcome to

A LEVEL AND SCIENCE

LEVELS SCIENCE



Louise Reynolds

Assistant Principal,
A levels and Science

Welcome to A levels and Science. We offer a full range of science courses from Level 1 to Level 3 for both adults and 16-18 year old learners. Coupled with great teaching and fully equipped laboratories, our courses are designed to help you develop the skills for the next steps in your science career.

We have an excellent track record of teaching A levels in humanities and English. In many subjects, the pass rate and proportion of students gaining higher grades is very good, with progression into top universities.

email: louise@ucg.ac.uk

Subjects covered include:

- **A Level**
- **Science**



A LEVELS

We offer a selection of A levels in the humanities subjects. These are two-year, full-time study programmes that include weekly tutorials and work experience. Our tutors can offer you advice on your preferences and guidance on the best combinations of subjects for your career pathway.

We have an excellent track record in teaching humanities and English. In many subjects the pass rates and proportion of students gaining higher grades is good.

We also offer a range of support to help you succeed including improvement classes and learning support for study in lessons.

Your A level programme will be made up of three subjects, tutorials and employment skills including work experience.



"I have learnt how to study independently and feel well equipped to start university next year. The City of Westminster College staff have been so supportive throughout the UCAS application process."

Course title	Start date	Mode	Duration	Campus	Course code
Art	Sept 2022	FT	2 Year	Paddington	1442
Business Studies	Sept 2022	FT	2 Year	Paddington	1442
English Language	Sept 2022	FT	2 Year	Paddington	1442
English Literature	Sept 2022	FT	2 Year	Paddington	1442
History	Sept 2022	FT	2 Year	Paddington	1442
Media Studies	Sept 2022	FT	2 Year	Paddington	1442
Politics	Sept 2022	FT	2 Year	Paddington	1442
Psychology	Sept 2022	FT	2 Year	Paddington	1442
Sociology	Sept 2022	FT	2 Year	Paddington	1442
Law	Sept 2022	FT	2 Year	Paddington	1442



General entry requirements:

To study three subjects at A level, you will need to achieve six GCSEs at grade 9-4/A*-C, including English language and maths. To study the humanities subjects you will need at least one grade 6/B in the humanities subject you wish to study.

We may require an academic reference about your suitability for your chosen study programme.

?

Do You Know...
Our experienced Careers Team will be available throughout your time with us to advise and guide you through the various options. You will also be fully supported in the process of applying to university through the UCAS system.

Students with previous A level experience including re-sit applications

Applications from students who have previously studied A-levels will be considered on a case-by-case basis but only where general or subject-specific entry criteria are met and you also pass the selection process.

SCIENCE

If you aspire to an exciting career in science (biomedical science, pharmacy, medical science and radiography) you could be changing the world as we know it. Look at the last few years and how science has helped society live in a new world.

Our science courses ensure you gain the theory, skills and practical techniques for a successful career in this sector. The curriculum includes physics, chemistry, biology and maths giving you the chance to progress into a wide range of science degrees and careers.

Learn from tutors who combine biology, chemistry and physics to get you to the highest standards possible so that you can progress into work or Higher Education. We offer courses at BTEC levels 1-3 aimed at students moving from secondary to further education. For adult learners who may not have been in education for some time we offer daytime access into university, diplomas or GCSE biology in the evening.



"I've always been fascinated by how things work. The facilities at CWC are next level and provide a fun learning environment"

Course title	Start date	Mode	Duration	Campus	Course code
Access to H.E. Diploma in Science	Sept 2022	FT	1 Year	Paddington	3029
BTEC Level 1 Diploma in Applied Science	Sept 2022	FT	1 Year	Paddington	6821
BTEC Level 2 Extended Certificate in Applied Science	Sept 2022	FT	1/2 Years	Paddington	1569
BTEC Level 3 Extended Diploma in Applied Science	Sept 2022	FT	1/2 Years	Paddington	1568
GCSE Biology	Sept 2022	FT	1 Year	Paddington	1395
GCSE Chemistry	Sept 2022	FT	1 Year	Paddington	1412



What's next?

Upon successful completion of your course you can enter full-time employment or (after completing Level 3) progress into university to pursue a degree in the sciences. Career opportunities include industries such as food technology, pharmaceuticals, medical research, petrochemicals, health, environmental protection and plant science.

?

Do You Know...
The Science department is an affiliate member of the British Science Association and Royal Society of Chemistry. We are active supporters in the WorldSkills UK competition, which is part of 'Find a Future' competition. Bringing together the UK's flagship skills and careers experiences.

Earning potential

The average salary for a biomedical scientist is £46,800 per year whilst doctors earn from about £45,000 to £100,000 upwards. (reed.co.uk)

Welcome to

B W W D





BACK TO WORK AND WORKFORCE DEVELOPMENT

Subjects covered include:

- **Back to Work**
- **Workforce Development Courses**

BACK TO WORK

We offer a number of free courses to help you on your way to a fulfilling career. Our programmes are aimed at developing English and Math for Work skills, helping you find employment and dealing with certain barriers that prevent you from working, such as IT skills or lack of confidence. We can provide you with training in your chosen occupational area.

We also provide a high level of support to build your skills, confidence and ability to succeed in finding the right job for you.

We provide our learners with on-going support once they leave the course by offering them access to our recruitment services and events through text messages and email alerts. For more information on our recruitment service go to our website: cwc.ac.uk

Contact our Business Development team for more information on **0207 258 2711** or email **business.development@cwc.ac.uk**



"I have returned to studying after some time, this course has helped me get over my fear of returning to work."

Course title

English for Work
Digital Citizen
Stepping Stones
Close Protection
Door Supervision
Closed Circuit TV (CCTV)
Construction Skills – CSCS CARD
Event Stewarding

WORKFORCE DEVELOPMENT COURSES

We meet the needs of employers by offering high quality work-based vocational learning in a wide range of industry sectors and skill areas. Employees can gain valuable skills while employers improve the efficiency and productivity of their business. We are flexible and business-focused, and our professional trainers design programmes that match the needs of your organisation. We also have an established and successful NVQ Assessment Centre.

Are you looking to develop your workforce, but unable to commit to lengthy courses?

We run a wide range of short courses, which provide employees with the qualifications and skills needed to improve the way they work and make a positive impact on your organisation.

Contact our Business Development team for more information on **0207 258 2711** or email **business.development@cw.ac.uk**



“Applying what I’ve learnt to real work helps me to understand how to upskill in a couple of days.”

Course title

Diploma in Team Leading Level 2-3
Diploma in Customer Service Levels 2-3
Diploma in Business Administration Levels 2-3
Diploma in Learning & Development Level 3
Diploma in Management Levels 3-5
Diploma in Coaching & Mentoring Level 4
TAQA Assessor Award Level 3
TAQA IQA Award Level 4



Welcome to

BUSINESS ACCOUNT

AND TING



Nick Clarke

Assistant Principal,
Business

We have a range of business and accounting courses from beginner to Level 3. Our accounting courses are accredited by AAT and will prepare you for the world of work with the potential to work in a wide range of sectors.

email: nick@ucg.ac.uk

Subjects covered include:

- **Accounting**
- **Business & Administration**

ACCOUNTING

If you aspire to an exciting career in the financial world, there are lots of opportunities. It's not only banks and accountancy firms who need people with financial skills, most companies across every industry will need someone who's good with finance.

Offered at levels 1, 2 and 3, our courses are designed to provide you with practical real-world accounting and finance skills that employers want.

Starting with beginner's courses such as bookkeeping and computerised accounts, you can progress through to the advanced Level 4 course.



"Studying AAT at the City of Westminster College has given me such a great foundation and I feel prepared for the world-of-work."

Course title	Start date	Mode	Duration	Campus	Course code
Bookkeeping Level 1	Sept/Feb	PT Eve	15 weeks	Paddington	1564
AAT Level 2 Foundation Certificate in Accounting	Sept/Jan	FT	18 weeks	Paddington	1069
AAT Level 2 Foundation Certificate in Accounting	Sept	PT Eve	36 weeks	Paddington	1070
AAT Level 2 Foundation Certificate in Accounting	Jan	FT	18 weeks	Paddington	1069
AAT Level 3 Advanced Diploma in Accounting	Sept	PT Day/ Eve	36 weeks	Paddington	1072
AAT Level 3 Advanced Diploma in Accounting	Jan	PT Day	36 weeks	Paddington	1072
AAT Level 4 Professional Diploma in Accounting	Sept	PT Day/ Eve	36 weeks	Paddington	1075
AAT Level 4 Professional Diploma in Accounting	Jan	PT Day	36 weeks	Paddington	1075



What's next?

On successful completion of your qualification, you can progress to higher accounting qualifications, a degree, an apprenticeship, employment or even start your own business. Most companies and public sector organisations employ accounting specialists, which consequently have great career progression opportunities.

?

Do You Know...

Most of our Accounting courses are Association of Accounting Technicians (AAT) qualifications, which are highly recognised and highly regarded by the industry.

Earning potential

The average salary for an accountant in the UK is £62,042 a year (accountancyage.com).

BUSINESS STUDIES

If you aspire to a career in business or financial services our courses offer you the opportunity to study at Levels 1-4 to take you into work or on to university.

Learn from tutors experienced in delivering high standard of academic work with lots of practical application. Employability is very important so you will get the opportunity to work on your skills and be offered work placements, work related projects like conducting market research for companies such as Timberland and Vans and competing in charity fundraising challenges. The higher national diploma offers practical help with progression into employment, CV workshops and interview practice with real life employers.

There are guest speakers in lessons from world-class brands like Google, Amazon and S&Ps Global credit ratings. In the second year of our Level 3 course, students are offered the chance to take a specialist pathway in subjects such as marketing, law or accounting and this helps you decide on a career path or university choice prior to making your UCAS choices. The majority of our Level 3 students progress onto Higher Education.



"I have met so many friends for life whilst studying the BTEC Business course here."

Course title	Start date	Mode	Duration	Campus	Course code
BTEC Level 1 Business and Administration	Oct	FT	1 year	Paddington	6826
BTEC Level 2 Extended Certificate in Business	Sept	FT	1 year	Paddington	1615
BTEC Level 3 Diploma/Extended Diploma in Business with specialist pathways	Sept	FT	1 year	Paddington	1462
Access to H.E. Diploma in Business	Sept	FT	1 year	Paddington	3025
Access to Law	Sept	FT	1 year	Paddington	4203
BTEC Level 4 HND in Business	Sept	FT	1 year	Paddington	1563



What's next?

Upon successful completion of your qualification, you will have lots of options to progress to. From our Level 4 HNC in Business, a degree at a university to employment in a range of jobs. Future job opportunities include Accountant, account manager, advertising executive, bank manager, business development manager, customer services manager, events manager, financial advisor, human resources manager, insurance broker, marketing executive, project manager, public relations executive and more.



Do You Know...

Students go on visits to places such as the Business Start Up Show and the Bank of England, giving you the chance to network and find out about the various parts of the business sector.

Earning potential

Ranging from £16,000 at entry level up to £74,000 at director level depending on the industry you choose ([payscale.com](https://www.payscale.com))



Welcome to

CONSTRUCT ENGINEER AND THE ENVIRONM

CONSTRUCTION, ENGINEERING AND THE BUILT ENVIRONMENT



Vito Martino

Assistant Principal,
Engineering, Construction and the Built
Environment

Welcome to Construction, Engineering and the Built Environment. We offer a range of employment-focused courses from Level 1 through to Level 4. Our courses are taught by industry-experienced staff in state-of-the-art facilities so you'll be ready to start your trade once you've completed your qualification.

email: vito@ucg.ac.uk

Subjects covered include:

- **Building Services**
- **Civil Engineering**
- **Engineering**
- **Motor Vehicle Maintenance Repair**

BUILDING SERVICES

Imagine a world without lighting, heating or clean water and sanitation. Everything that makes a building safe and comfortable needs to be designed, installed and maintained by highly skilled people such as building service engineers. Our building services courses are suitable for anyone looking to start a career or up skill in this trade.

Getting work experience is important so full-time 16–18-year-old students take part in work experience, workplace visits or project work with London-based construction businesses. In addition to vocational learning students will develop their English, Maths and employability skills to match industry standards.



“I’m learning skills I can use to help make people proud of their home.”

Course title	Start date	Mode	Duration	Campus	Course code
City & Guilds Level 1 Certificate in Construction	Sept 2022	FT	1 Year	Paddington	1024
City & Guilds Level 1 Diploma in Plumbing Studies	Sept 2022	FT	1 Year	Paddington	2378
City & Guilds Level 2 Diploma in Plumbing Studies	Sept 2022	FT	1 Year	Paddington	1589
City & Guilds Level 1 Diploma in Electrical Installation	Sept 2022	FT	1 Year	Paddington	6505
City & Guilds Level 2 Diploma in Electrical Installation	Sept 2022	FT	1 Year	Paddington	1592



What's next?

Upon successful completion, you can progress onto an apprenticeship or employment in electrical installation and plumbing, eventually leading to become a qualified electrician or heating engineer status. Future job opportunities include building technician, maintenance engineer, electrician, facilities manager, heating engineer, plumber, site manager and more.

?

Do You Know...

We partner with employers such as Wates Construction, Willmott Dixon and Mace to provide our students with exciting workplace opportunities and experiences.

Earning potential

Starting salaries for graduate building services engineers are generally in the region of £26,000 to £28,000. (prospects.ac.uk)

CIVIL ENGINEERING

If you are looking for a career in construction or civil engineering then our courses will help you realise that ambition. You might be a school leaver or someone wanting to upskill.

You'll learn from teachers with industry experience and meet industry standards through practical hands-on training and theory of the trade. Work experience is important so full-time 16-18 students take part in work experience and work-related projects with London-based construction engineering companies.

In addition to the vocational learning, students are able to develop their English, Maths and employability skills to match the requirements demanded by industry and/or higher education.



"Studying Civil Engineering here has given me the skills and confidence I need to go into the world-of-work."

Course title	Start date	Mode	Duration	Campus	Course code
City & Guilds Level 1 Certificate in Construction Skills	Sept 2022	FT	1 Year	Paddington	1024
BTEC Level 3 Extended Diploma in Civil Engineering (16-18)	Sept 2022	FT	1 Year	Paddington	1598
BTEC Level 3 National Diploma in Building Services Engineering	Sept 2022	FT	1 Year	Paddington	1593
BTEC Level 3 Diploma in Civil Engineering (Part-time employed only)	Sept 2022	FT	1 Year	Paddington	1598
BTEC Level 4 HNC in Civil Engineering (Part-time employed only)	Sept 2022	FT	1 Year	Paddington	1734



What's next?

Upon successful completion of the Level 3 course, you can progress to an advanced/higher apprenticeship in a relevant area or the HNC in civil engineering offered at the College. You can also choose to study a degree at a university. Future job opportunities may include building inspector, chartered surveyor, civil engineer, maintenance manager, project manager, site manager and more.

?

Do You Know...
If you are already employed in the construction and built environment sectors and looking to develop your design capability or career, there are Level 3 and Level 4 HNC part-time programmes suitable for this.

Earning potential

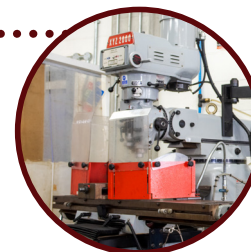
Ranging from £18,000 at entry level up to £48,000 with the potential to earn more (payscale.com)

ENGINEERING

Engineering is a creative career with a wide range of roles and disciplines. It involves the application of mathematical methods and scientific principles to turn ideas and materials into products and systems.

Our full-time Level 3 programme focuses on the specialist areas of electrical/electronic engineering and mechanical engineering with a choice of pathways in year 2. You'll be taught by teachers who are specialist engineers in electrical/electronic engineering and mechanical engineering and learn in dedicated engineering and computer labs.

Work experience is important so students on full-time study programmes take part in work experience, workplace visits and employability-related project work in partnership with engineering and construction businesses. In addition to the vocational and employability opportunities on offer, students are able to develop their English and Maths skills to match the requirements needed by industry and higher education.



"The teachers at CWC have been fantastic. They are always willing to help and the facilities here are so modern."

Course title	Start date	Mode	Duration	Campus	Course code
BTEC Level 3 Foundation/ Extended Diploma in Engineering	Sept 2022	FT	1 Year	Paddington	1566
BTEC Level 3 National Diploma in Engineering	Sept 2022	FT	2 Year	Paddington	1566



What's next?

Upon successful completion of your course, you can progress directly to an apprenticeship or employment as an engineering technician or go into higher education to study for an engineering degree. Future job opportunities may include Aerospace/avionics engineer, automotive engineer, CAD technician, electrical/electronic engineer, engineering technician, mechanical engineer, motor sport engineer, product designer, production engineer signal engineer and more.



Do You Know...

We also offer a part-time two-year national diploma course for employed students and apprentices wishing to upskill and progress in their careers.

Earning potential

Ranging from £18,000 at entry level to in excess of £48,000 (payscale.ac.uk)

MOTOR VEHICLE MAINTENANCE REPAIR

If you aspire for a career in engineering and the retail motor industry, our series of one year motor vehicle courses are approved by City & Guilds (C&G) and are designed to meet the needs of the sector.

Learn from teachers that have industry experience. Students have access to modern motor vehicle workshops and computer laboratories so your training will be theory and hands-on. In addition to the vocational learning, students are able to develop their English and Maths skills to meet the standards that industry demands.

We also embed employability skills and support students in applying for further study or employment or once skilled own your own garage.



**"I have always loved cars
and now I get to turn my
passion into a career."**

Course title	Start date	Mode	Duration	Campus	Course code
City & Guilds Level 1 Diploma in Vehicle Maintenance	Sept 2022	FT	1 Year	Paddington	1021
City & Guilds Level 2 Light Vehicle Maintenance and Repair Principles	Sept 2022	FT	1 Year	Paddington	1022
City & Guilds Level 3 Light Vehicle Maintenance and Repair Principles	Sept 2022	FT	1 Year	Paddington	6345



What's next?

Upon successful completion of your course, you can progress to the next level or enter employment. Future career opportunities include Automotive engine tester, electrical engineer, electronics technician, garage worker, MOT vehicle examiner, motor mechanic, motor sport technician, Motor vehicle breakdown engineer, motor vehicle fitter, technical sales engineer, workshop Technician and more.

?

Do You Know...
We have a state-of-the-art fully equipped motor vehicle workshop where you can put theory into practice and develop the skills you need to have a successful career in the motor vehicle and repair sector.

Earning potential

Ranging from £18,000 at entry level up to £35,000 with experience
(nationalcareersservice.direct.gov.uk).



Welcome to

CREATING INDUSTRIES AND DIGITAL

CREATIVE INDUSTRIES DIGITAL



Bilal Bobat

Assistant Principal,
Creative Industries and Digital

We're proud of our offering in the creative and digital industries. You'll have the opportunity to be taught by industry experts, and learn in state-of-the-art facilities with exposure to the latest developments in the sector. We ensure learning is not limited to the classroom, our student experience is rich and industry led with exciting projects throughout the year.

email: bilal@ucg.ac.uk

Subjects covered include:

- **Art, Design and Photography**
- **ICT**
- **Media**
- **Performing Arts**
- **Sound and Music**

ART, DESIGN & PHOTOGRAPHY

If you have a creative flair and an eye for great design one of our art, design or photography courses could be for you!

There are four main specialist areas to study fashion and textiles, photography, Fine Art and graphic and 3D Design. In each of these areas you will be taught by an experienced teaching team with professional experience. They will push you to reach exciting, imaginative and challenging solutions, where aesthetics and function are balanced and ideas are thought provoking and visually stimulating.

We have a range of dedicated art studios, photography studios, a professional dark room and Apple Mac suites. These computers have a full range of professionally relevant software including Photoshop, InDesign and Illustrator. We also have industry-standard equipment including professional cameras.

Our courses will give you the opportunity to work on exciting projects and learn through hands-on, practical experiences in our specially designed studios.



"I want to create art that makes people stop and think. And, that's what I am doing."

Course title	Start date	Mode	Duration	Campus	Course code
Level 1 Diploma in Art & Design (16-18, Adults)	Sept 2022	FT	1 Year	Paddington	1042
Level 2 Diploma in Art & Design (16-18, Adults)	Sept 2022	FT	1 Year	Paddington	1001
Level 2 Diploma in Photography (16-18, Adults)	Sept 2022	FT	1 Year	Paddington	1001
Level 3 Applied General/Extended Applied General Diploma in Art & Design	Sept 2022	FT	1 Year	Paddington	1459/ 1056
Level 3 and 4 Foundation Diploma in Art & Design (16-18, Adults)	Sept 2022	FT	1 Year	Paddington	4208



What's next?

Upon successful completion of Level 3, you can progress onto the Level 3/4 Foundation Diploma in Art and Design at the College, enter employment or pursue a degree at university.

?

Do You Know...

Our photography courses are supported by global organisation Trend Micro. This relationship benefits our students by offering them great opportunities such as real design briefs, external exhibitions, the opportunity to build professional contacts and for some financial support towards study.

Earning potential

Ranging from £18,000 at entry level up to £48,000 with the potential to earn more (payscale.com)

ICT

ICT is required by all businesses in today's world. Whether it's the ability to communicate and run administration using software, the advanced technical knowledge to design new programs or the knowledge of how to build secure networks, ICT skills are in huge demand and the sector provides millions of job opportunities.

Through a mix of theoretical and practical learning, our computing courses will help you to develop a solid general knowledge base across a range of computing topics preparing you for your next steps.

There is a skilled team of lecturers, delivering teaching to the highest standards. Our teaching reflects new and innovative technologies to give every student the opportunity to become a professional in the field of ICT.

Employability and enterprise skills are included in our courses and we work with employers to ensure that our vocational provision meets the needs of employers and changing demand.



"Being able to borrow a laptop from the college has meant I can practice what I learn in class at home."

Course title	Start date	Mode	Duration	Campus	Course code
BTEC Level 1 Diploma for IT Users (16-18, Adults)	Sept 2022	FT	1 year	Paddington	1009
BTEC Level 2 Diploma for IT Users (16-18, Adults)	Sept 2022	FT	1 year	Paddington	1004
BTEC Level 3 Diploma/Extended Diploma ICT Practitioners (16-18, Adults)	Sept 2022	Adults – PT 16-18 – FT,	1 year	Paddington	1005



What's next?

On successful completion of Level 3, you can progress onto a HNC or foundation degree in computing at our sister college*, or study degree at university such as BSc Computing Science or BSc Computing and Digital Marketing.

Career opportunities are vast and varied including games designer, computer technician, data consultant, digital marketing officer, IT analyst, mobile app developer, network engineer, software developer, solutions engineer, systems analyst, technical support officer, web designer and web developer.

?

Do You Know...
We have award-winning
staff including teachers
who have won Pearson
National Teaching Award.

*To find out more about our sister college,
the College of North West London, visit
cnwl.ac.uk

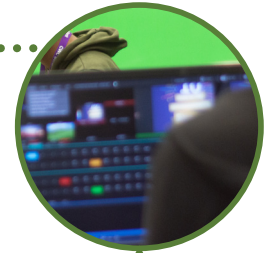
MEDIA

By 2025 the media and entertainment industry in the UK will be worth £88 billion. With demand for jobs in the sector ever-increasing, it's an exciting time to be joining.

Our media courses mainly focus on television and video and cover topics like moving image, single camera, production, multi-camera studio production, digital editing, factual programming, single-camera drama and critical approaches. Additional units for study include audio, radio, animation and photography.

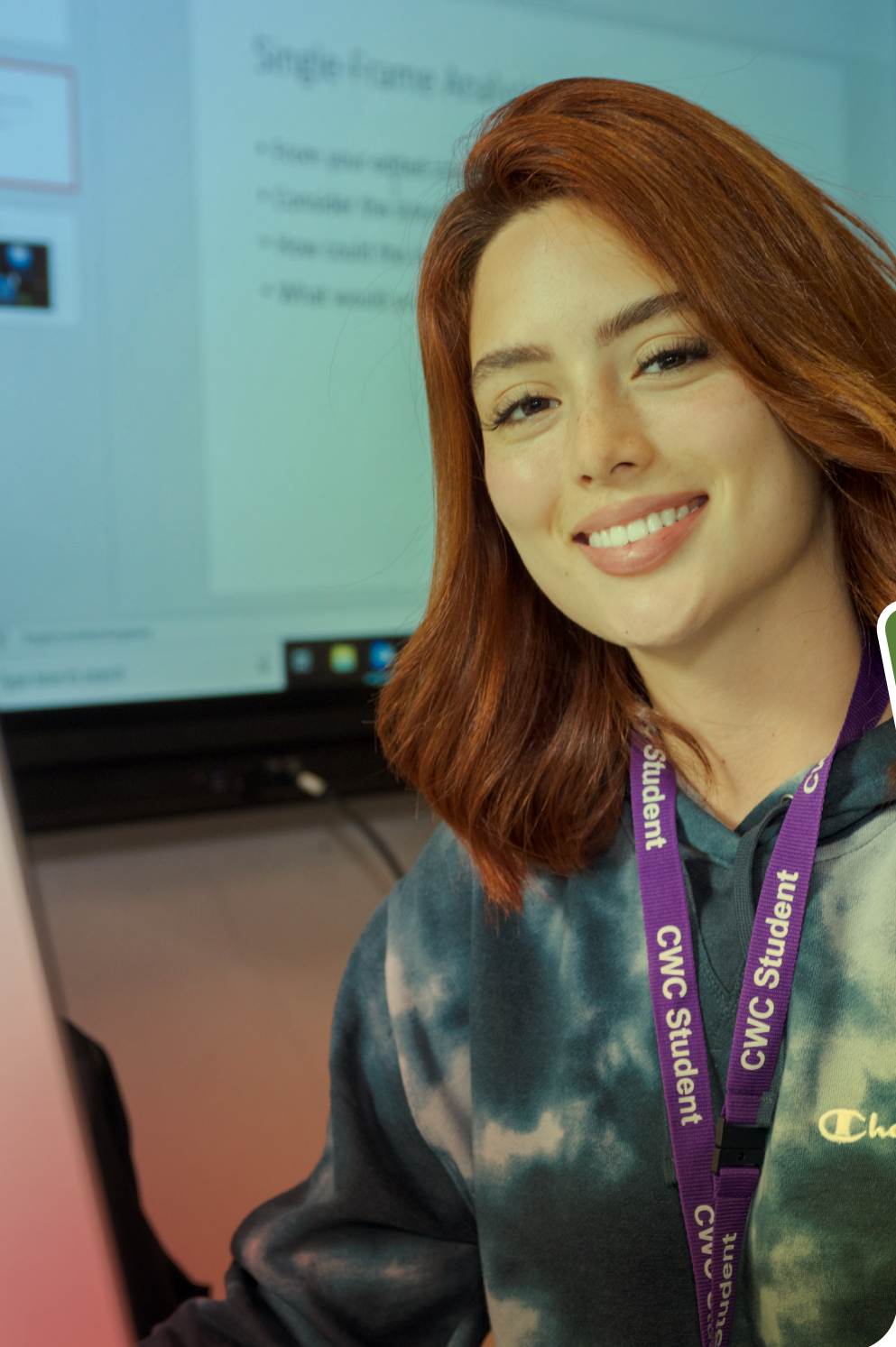
Our facilities include dedicated TV and radio studios and Mac editing suites. You will learn from experienced teachers who continue to work in the creative industries or further their knowledge through advanced research.

We work in partnership with a range of companies, to provide work experience opportunities and work-related projects. Over the past six years, we have established a good working partnership with Westminster City Council and our students get the opportunity to work with professional journalists to produce corporate videos for the Council.



"I've really enjoyed learning about the editing process of making music videos."

Course title	Start date	Mode	Duration	Campus	Course code
Level 1 Diploma in Creative Media Production and Technology (16-18, Adults)	Sept 2022	FT	1 year	Paddington	1033
Level 2 Diploma in Creative Media Production and Technology (16-18, Adults)	Sept 2022	FT	1 year	Paddington	1037
Level 3 Diploma/Extended Diploma in Creative Media Production (16-18, Adults)	Sept 2022	FT	1 year	Paddington	1047



What's next?

Upon successful completion at each level, you can enter employment or after completing Level 3, you can pursue a university degree. Potential future job opportunities include 3D animator, AV technician, broadcast engineer, camera operator, digital designer, director, floor manager, journalist, lighting technician, producer, radio broadcast assistant, runner, screen writer, sound engineer, special effects designer, stage manager and video editor.

?

Do You Know...

The leading film, television and online media school, MetFilm School offers our students discovery and experience days, giving them the chance to work with professionals in practical workshops using industry-standard equipment to enhance your study.

Earning potential

The earning potential for careers in media range from £20,670 to £69,700 with uncapped potential once established. (findcourses.co.uk)

PERFORMING ARTS

Our performing arts courses will develop your skills in acting, directing, movement and singing. We have a range of levels on offer and are here to help you develop and grow, ensuring you gain both the practical and academic skills that you'll need to progress on to Higher Education including drama school or directly into work.

The College has a state-of-the-art purpose-built theatre, a dance studio and workshop spaces. You will be taught by an experienced team, who continue to work in the Creative Industries and continue to further their knowledge through research.

Gaining employability skills is important so we work with a number of companies to provide work experience and work-related project opportunities either individually or in a group.

Projects have included casting for Wind/Rush Generations at the National Theatre Connections Festival, a Children's Theatre tour to local primary schools, performing at both the Kiln and Soho Theatres (in association with National Theatre Connections) and a Christmas production of Little Shop of Horrors at our Sarah Siddons Theatre. We also make regular visits to participate in workshops at professional theatres and to watch their productions.



"I have learnt to express myself in front of an audience, which has helped me become more confident."

Course title	Start date	Mode	Duration	Campus	Course code
UAL Level 2 Diploma in Performing & Production Arts (16-18, Adults)	Sept 2022	FT	1 year	Paddington	1014
UAL Level 3 Diploma/Extended Diploma in Performing & Production Arts (16-18, Adults)	Sept 2022	FT	1 year	Paddington	1015



What's next?

On completion of your study, you can pursue a university degree or enter employment. Potential future job opportunities include actor, artistic director, casting director, choreographer, dancer, drama coach, performing artist, playwright, producer, prop manager, set designer, singer, stage hand, stage manager, theatre director and theatre producer.

?

Do You Know...

Recently our extended diploma students competed to become the cast that premiered in *Wind/Rush Generations* at the National Theatre Connections Festival.

Earning potential

Ranging from £10,000 - £14,000 at entry level with uncapped potential once established. ([payscale.com](https://www.payscale.com))

SOUND AND MUSIC

If you're a budding musician or music producer, our courses will equip you with the originality, innovation and creativity you'll need to break into this lively and dynamic but competitive industry.

We are one of the very best equipped colleges in the country for sound and music. Our fantastic facilities include dedicated professional analogue and digital recording equipment featuring a 24-track recording studio (analogue and digital), a full recording suite with individual hardware workstations and mixers, a Mac music production suite with Pro-Tools and Logic Pro, an analogue Studer Tape machine and a Midus Live Sound set up.

You will also have access to a fully functioning professionally equipped recording studio, rehearsal rooms and access to the College's professional theatre for live sound and performances.



"Being able to record music in a proper studio with the support of teachers that have real life experience has been so exciting."

Course title	Start date	Mode	Duration	Campus	Course code
Gateway Diploma in Skills for Music and Music Technology Level 2 (16-18, Adults), in partnership with The Islington Music Workshop	Sept 2022	FT	1 year	Paddington	6509
UAL Level 2 Diploma in Music Production and Performance (16-18, Adults)	Sept 2022	FT	1 year	Paddington	1048
UAL Level 3 Diploma/ Extended Diploma in Music Production	Sept 2022	FT	1 year	Paddington	1049



What's next?

Upon successful completion of the Level 3, you can progress onto university or into employment. Future job opportunities include music producer, music therapist, musician, private music teacher, secondary school teacher, sound designer, sound engineer, sound technician, broadcasting/film/video.

?

Do You Know...

You'll be taught by an experienced team with many years' music industry experience and benefit from regular guest lectures and master classes from music industry professionals.

Earning potential

Ranging from £10,000 at entry level with the potential to earn in excess of £100,000 dependent on experience (payscale.com)



Welcome to

ENGLISH, MATHS AND SCIENCE

MATHS KILLS



Mark Stacey

Assistant Principal,
English, Maths and Skills

Good English and Maths skills are vital both in terms of our personal lives and having a successful career. We offer qualifications in GCSE and Functional Skills, that employers and universities/ colleges alike want. So whether you study them as part of a full-time programme or on their own, you will find improving your English and Maths skills a very rewarding experience.

email: mark@ucg.ac.uk

Subjects covered include:

- **GCSEs and Functional Skills**

GCSES AND FUNCTIONAL SKILLS

English and Maths skills will help you achieve better results in your studies and enrich your work and life in general. You will be supported to learn and develop your ability and skills.

You will acquire skills that you can apply in many aspects of your everyday life including reading for pleasure, writing emails, understanding contracts, applying for jobs, writing your CV and presenting your ideas or critical thinking.

Our GCSE English and Functional skills courses aim to improve your writing, reading and oral communication skills. You will read a variety of fiction and non-fiction texts, developing skills in language analysis, evaluation and comparison. You will also practice writing in a range of different styles for different audiences and purposes including creative writing and transactional writing. You will also develop your spelling, punctuation, vocabulary and grammar and work on your speaking and presentation skills.

If you decide to study our GCSE Maths course, you can expect to learn a range of skills, which will equip you for the world of work and help you in everyday life.



“The teachers are very experienced with a wealth of knowledge in the industry.”

Course title	Start date	Mode	Duration	Campus	Course code
GCSE Math (Adults) (Evenings)	Sept 2022	PT	1 Year	Paddington	4836
GCSE English and Functional Skills (Adults) (Evenings)	Sept 2022	PT	1 Year	Paddington	4835



What's next?

GCSEs in English and Maths open up new opportunities for your future. They provide you with the correct knowledge and understanding to create your pathway into your dream job or to study at degree level.



Do You Know...
A grade 4 or above in
GCSE English and Maths or
a pass in Functional Skills
will open up opportunities
for work or university.

Earning potential

People with good GCSE grades in English and Maths could earn approximately £2,000 more than those who don't have these qualifications (pathwaygroup.co.uk)



Welcome to

HEALTH WELLBEING AND CARE

HEALTH, WELLBEING CARE



Sandip Charlton

Assistant Principal,
Health, Wellbeing and Care

Welcome to Health, Wellbeing and Care. If your ambition is to be a nurse, sports coach, social worker, police officer, beautician, member of cabin crew, or a midwife to name a few. Our courses in Health, Wellbeing and Care are for you. You'll learn in fantastic industry-standard facilities, and be taught by passionate and supportive teaching staff, all focused on helping you progress into the career you choose.

email: sandip@ucg.ac.uk

Subjects covered include:

- **Health and Social Care**
- **Public Service**
- **Sports**
- **Travel and Tourism**



HEALTH AND SOCIAL CARE

If you're passionate about caring for others and want to develop your knowledge and experience of the health and social care sector, we can offer you excellent learning and support from teachers with strong industry experience.

You will explore caring and safeguarding for adults and children and examine areas including physiology and psychology. We provide industry insight into professional practice and how to evaluate the patient's needs.

There is a fantastic range of trips including visits to the Museum of Childhood, the Technology Show for Special Needs and Nursery World.

Students on the Level 3 course will undertake a specialist work placement with an employer in the care sector. You will need to meet the relevant employment checks before being placed.



"I want to help improve the quality of people's lives and the course is helping me to make this happen."

Course title	Start date	Mode	Duration	Campus	Course code
CACHE Level 1 Diploma in Health & Social Care (16-18, Adults)	Sept 2022	FT	1 Year	Paddington	2659
CACHE Level 2 Extended Diploma in Health & Social Care (16-18, Adults)	Sept 2022	FT	1 Year	Paddington	1026
CACHE Level 3 Certificate/Diploma in Health & Social Care	Sept 2022	FT	1 Year	Paddington	1460



What's next?

Many of our students progress onto university to study a variety of degrees including nursing, environmental health, social policy, criminology, welfare studies and nutrition. Careers in this sector include; carer, dental hygienist, family support worker, health care assistant, midwife, nurse, occupational therapist, radiologist, social worker, speech therapist, youth worker and more.



Do You Know...

A career in the Health and Social care sector will give you the opportunity to make a real difference to peoples' lives, whether that's on the front-line treating patients, conducting important lifesaving research or in an administration role.

Earning Potential

The average salary for a social worker in the UK is £23,691 annually; the range is £18,135 to £52,024 (reed.co.uk).

PUBLIC SERVICES

If life as a paramedic, police officer or member of the armed services appeals to you, then our public services courses will suit you perfectly. There are many exciting job opportunities in the public services that help keep our communities safe and thriving.

You will learn from teachers that have industry experience and provide insight into life in public services and prepare you in a structured and supportive environment. You will develop your employability skills, physical fitness and academic thinking, which gives you the opportunity to enter employment when you finish the course or progress on to university.

Guest speakers come in throughout your course, giving you real insight into a career in public services and there are fun activities, assault courses and demonstrations. We offer outdoor adventure residential trips including camping, canoeing, orienteering, abseiling and climbing. Your career is important so you get the opportunity to gain work experience, connection with employers and work-related projects to give you a head start in your chosen career.



"This course is my gateway to doing what I love most, helping society."

Course title	Start date	Mode	Duration	Campus	Course code
NCFE Level 1 Diploma in Uniformed Services (16-18)	Sept 2022	FT	1 Year	Paddington	2654
NCFE Level 2 Certificate in Uniformed Services (16-18)	Sept 2022	FT	1 Year	Paddington	1040
NCFE Level 3 Diploma/Extended Diploma in Uniformed Services (16-18)	Sept 2022	FT	1 Year	Paddington	1051



What's next?

Upon successful completion of each level, you can expect to enter employment or after completing our Level 3 course you could choose to progress on to a degree-level course at college or university.

?

Do You Know...

Our student success rates are consistently over 90% and significantly above the national average so you'll be more competitive in the job market.

Earning potential

Ranging from £18,000 at entry level, rising to £48,000+ with more experience (prospects.ac.uk).

SPORT

If you have the ambition of competing in sport at the highest level or coaching an academy or becoming the next CEO of Nike, studying a sports course with us is the path for you.

Our sports courses will allow you to develop a strong set of skills, preparing you to begin a successful career in the sports industry. At Levels 1 and 2 students become confident in the basics and complete their course feeling prepared for the next step. Students on our Level 3 courses have the option to specialise in an area of particular interest to them.

You'll learn from excellent teaching and support teachers who provide trips to places like Wembley Stadium, Manchester Velodrome and the Sky Sports Studios. You'll also have the opportunity to join the College basketball and football teams and take part in enrichment activities such as jujitsu and boxing.

You'll develop as an athlete, coach and personal trainer and be provided with relevant work experience opportunities.



I've made great connections with people and industry on my sports course. My teachers are also brilliant."

Course title	Start date	Mode	Duration	Campus	Course code
BTEC Level 1 Diploma in Sport and Active Leisure	Sept 2022	FT	1 Year	Paddington	1630
NCFE Level 2 Diploma in Sport	Sept 2022	FT	1 Year	Paddington	1010
NCFE Level 3 Certificate in Gym Instructing and Personal Training	Sept 2022	FT	1 Year	Paddington	1128
NCFE Level 3 Diploma/Extended Diploma in Sport and Physical Activity – Sport Coaching Pathway	Sept 2022	FT	1 Year	Paddington	1039
NCFE Level 3 Diploma/Extended Diploma in Sport and Physical Activity – Sport and Exercise Science Pathway (Adult and 16-18)	Sept 2022	FT	1 Year	Paddington	1052



What's next?

Upon successful completion of the Level 3, you can progress onto an HND course or a science degree in sports therapy, sports nutrition, sports coaching, sports studies, sports and exercise science, sports massage as well as sports psychology.

Future opportunities may include community sports leader, dietician, fitness instructor, nutritionist, PE teacher, sports psychologist, sports referee, sports therapist and more.

?

Do You Know...

Lessons take place in our sports hall and fitness suite, which offer the latest resistance training equipment and special gym-membership rates for students.

Earning potential

Ranging from £18,000 at entry level rising to £48,000 with experience and above (prospects.co.uk)

TRAVEL AND TOURISM

If you see yourself working as a holiday representative or managing a chain of hotels, are passionate about local culture or have a desire to help people make the most of their leisure time, you'd love a career in travel and tourism.

Learn from teachers with industry experience, high professional standards and the skills required by the travel and leisure sector. You could also travel within the UK and Europe on our residential exchange programme. For those looking for direct entry to employment, we provide an Introduction to Cabin Crew short course.

You'll study practical work-related projects with teachers who have years of real-industry experience and be supported to develop skills for job applications, interviews and visit real employers.



"I chose to study Travel and Tourism as it is a specialist course and is very detailed in how the industry works and operates."

Course title	Start date	Mode	Duration	Campus	Course code
City & Guilds Level 1 Diploma in Travel and Tourism (16-18, Adults)	Sept 2022	FT	1 Year	Paddington	1008
City & Guilds Level 2 Diploma in Travel and Tourism (16-18, Adults)	Sept 2022	FT	1 Year	Paddington	1006
NCFE Level 3 Diploma / Extended Diploma in Travel & Tourism (16-18, Adults)	Sept 2022	FT	1 Year	Paddington	1007



What's next?

Upon successful completion of Level 3 you can progress onto a university degree or enter employment. Future job opportunities may include airport customer service agent, cabin crew, events officer, hotel manager, tour operator, tourism officer, travel agent and more.

?

Do You Know...

You can gain work experience from industry leading employers and have the opportunity to experience a British Airways Training Day. Students also visit sites such as South Bank and Cadbury's World.

Earning potential

Entry-level salaries within the travel and tourism sector typically start at around £15,000-£19,000 (*prospects.ac.uk*)



Welcome to

LIFELO LEARN

LONG ING



Phyllis Scoon

Assistant Principal,
Lifelong Learning

ESOL and EFL courses are designed for non-native speakers of English who wish to improve their language skills and use of English in daily life.

Our ESOL and EFL qualifications give students better chances in work, and help them to progress to other Further or Higher Education courses.

email: phyllis@ucg.ac.uk

Subjects covered include:

- **English as a Foreign Language (EFL)**
- **English for Speakers of Other Languages (ESOL)**

ENGLISH AS A FOREIGN LANGUAGE (EFL)

Our Lifelong Learning department offers a small provision of English as a Foreign Language (EFL) courses delivered by highly skilled, experienced and specialist teachers.

International English Language Testing System (IELTS) and First Certificate in English (FCE) courses are designed to prepare you for exams and start your journey into Higher Education or into employment in the UK and internationally. Many students have successfully gained places on university courses with excellent results.

IELTS, CAE and FCE courses run two days a week for four hours over 10 weeks.



“My confidence has grown since joining this course, I feel my English knowledge has increased.”

Course title	Start date	Mode	Duration	Campus	Course code
Preparation for IELTS (Adults)	Contact us *	PT	10 Weeks	Paddington	Contact us *
IELTS	Contact us *	PT	10 Weeks	Paddington	1266

* Contact: customer.services@cw.ac.uk



What's next?

Upon successful completion of the IELTS qualification, you can apply to study at many UK and international schools, colleges and universities, or work for employers in these regions.

?

Do You Know...
Whether you are applying for study, work or a visa, the IELTS examination is the same in terms of content, format, level of difficulty and scoring.

ENGLISH FOR SPEAKERS OF OTHER LANGUAGES (ESOL)

Our ESOL courses will help you if you want to find a job, study another college course, or go to university. You will also develop communication skills, which will help you become part of your local community and access services around you. Our teachers are highly qualified, very experienced and are always ready to help you.

We have high success rates on these courses, and many of our past students have moved on to other courses offered at the College, found jobs, or started their own businesses.

Available from September to July, our programme of courses consists of ESOL for Adults (daytime and evening), and ESOL for Young Learners (16-18 full-time).

Courses for young learners include subjects related to Science, Health and Social Care, Drama, Art, employability and Functional Skills Maths.



"I couldn't speak or understand English when I enrolled at the College. I can now have a conversation and understand so much, thank you College."

Course title	Start date	Mode	Duration	Campus	Course code
English for Speakers of Other Languages (ESOL)	Contact us*	16-18 (Full Time), Adults (Part Time)	1 Year	Paddington	1300

* Contact: customer.services@cwc.ac.uk



What's next?

Progression can include moving to the next level of ESOL or onto a vocational course upon completion of Entry 3/Level 1 ESOL. As your English improves so will your employment opportunities.

ESOL course levels

Pre-Entry is specifically for unemployed candidates who are unable to speak, read and/or write in English or people with a low level of English who would like to attend classes to improve their communication. Classes focus on basic literacy, pronunciation and writing practice, reading simple texts and forms.

Entry Level is suitable for candidates with some understanding of the English language, who can read, write and communicate with others but would like to develop their skills further. Employability is a core element of the courses and students develop their job searching and interview skills.

The Level 1 is designed for candidates with a good command of English who would like to get more practice in reading, writing, speaking and listening and develop their skills further. Employability is a core element at the courses.

Do You Know...
Our ESOL courses run
throughout the year from
September to July at our
Maida Vale and Paddington
Green campuses.



Welcome to

SUPPORT LEARN

RTED ING



Nicola McClean

Assistant Principal,
Student Services and Supported Learning

Supporting Learning offers students with learning difficulties and disabilities structured programmes of learning to develop independent living and employability skills and prepare for adulthood. There are three strands of learning:

Students with complex needs:

Skills for Living

Independent Living Skills:

Living to Learning

Employability:

- Preparation for Work
- Pre Internship
- Supported Internships

Our students learn a range of important skills such as cooking, travel training, social and communication skills as well as potential progression into Supported Internships and experiences working in the NHS, Local Authorities and small businesses, which can lead to paid employment or supported apprenticeships.

email: nicola@ucg.ac.uk



Supported Learning

Our Supported Learning team offers educational progression routes for learners with learning difficulties and disabilities. Courses are personalised to meet the individual needs of each student including adapting resources and timetables, supporting independent travel and living skills.

We are based in purpose-built facilities and our programmes are specially planned to enable students to learn through practical daily living activities in the college and local community.

Facilities include:

- Specially adapted and fully fitted kitchen and utility room
- Garden
- A daily living environment
- IT classrooms and art and craft rooms
- Accessible toilets and hygiene facilities

Courses and progression routes

Skills for Living

Is a practical-based course designed for students with severe learning difficulties. Students work to develop their independence and communication skills.

Progression

Students are expected to progress onto the course 'From Living to Learning' (below), or Adult Social Care funded day provision or adult education courses.

From Living to Learning

The purpose of this course is to build on existing knowledge and develop skills



towards independent living and work. Each aspect of the course is tailored to the individual.

Progression

Students can progress onto our 'Preparation for Work' course or into sheltered supported or open employment. Some students may progress to a 'mainstream' college course at Entry Level 3.

Preparation for Work

This course is for people with learning difficulties who wish to access mainstream college or job opportunities. Students will need to be working at around Entry Level 2 in literacy and numeracy and will be expected to be independent travellers or able to work towards

this. Students must also show a willingness to taste a variety of employment and vocational experiences.

Progression

Students will be looking to progress onto a Pre or Supported internship, paid employment or a college course at a higher level.

Pre-Internship

Is a one-year college-based course, which will prepare students for the Supported Internship or other workplace opportunities.

Supported Internship

Is for young people between the ages of 16-25 with special educational needs and disabilities. It is intended to enable young people with learning difficulties and/or disabilities to achieve sustainable paid employment by equipping them with the skills they need through learning in the workplace. Students are supported by a job coach and tutors throughout the year.

Entry into Construction

(Certificate in Construction Multi-skills)

This qualification provides an introduction to the construction trades at Entry Level 3.



Welcome to

TEACH TRAINING

HER ING



Phyllis Scoon

Assistant Principal,
Lifelong Learning

email: phyllis@ucg.ac.uk



Sandip Charlton

Assistant Principal,
Health, Wellbeing and Care

email: sandip@ucg.ac.uk

Our teacher training courses are tailored to the needs of new and existing part-time and full-time teachers, and teachers who are experienced but wish to start their journey to gain Qualified Teacher Learning and Skills (QTLS) status for post-16 education and training.

Subjects covered include:

- Teaching Training

TEACHER TRAINING

Our Teacher Training department is well-established with a history of providing high quality teacher education courses to adults. You will be taught and coached by highly experienced and knowledgeable practitioners, who are from a broad range of backgrounds.

There are two intakes a year for our Level 3 Award in Education and Training (September and February). The course is 16 weeks in length and is taught on one evening per week and is perfect for those wishing to gain a 'licence to practice' qualification in the sector. You do not need to be teaching or have a teaching placement to take this course.

Our Level 5 Diploma in Education and Training course also has two entry points in the year and is run part-time across two years, on one evening per week. This course is for teachers who are currently delivering at least 50 hours per year in Further Education.

College or adult learning/skills provider. If you are not currently working in the sector but want to train to teach, you will need a subject specialism and have secured a work placement ahead of joining the programme..

Fees are payable for both courses. Please visit our website for up-to-date information about fees.



"I have always wanted to be a teacher but wasn't sure I could do it. After enrolling at the College I realised my potential and am now on route to completing my teaching qualification."

Course title	Start date	Mode	Duration	Campus	Course code
Level 3 Award in Education and Training	Sept 2022	FT	1 Year	Paddington	1042
Level 5 Diploma in Education and Training (In-Service)	Sept 2022	FT	1 Year	Paddington	1001



Features

- A recognised teaching qualification
- Small class sizes
- Evening delivery (4pm-7pm)
- Highly experienced classroom practitioners
- 1-2-1 coaching (Level 5)

?

Do You Know...
The vast majority of our Level 5 Diploma graduates go on to have successful careers in education and training and achieve Qualified Teacher Learning and Skills Status (the sector equivalent to QTS) after their course.

Earning potential

The average teacher salary in the UK is £40,694 (reed.co.uk).



Short Courses



We offer a variety of short leisure courses that run in the evenings and at weekends. These courses are for students aged 18 years and above.

- Acting for Beginners
- Adobe Premiere Pro: Advanced
- Adobe Premiere Pro: Beginners
- Adobe Premiere Pro: Intermediate
- Advanced Photography
- Art History – An Introduction
- Art History Movements and Moments
- Beginners Fashion Design
- Beginners French
- Beginners French – Module 2
- Beginners Photography
- Beginners Spanish – Module 1
- Beginners Spanish – Module 2
- Beginners Spanish – Module 3
- Bookkeeping – Level 1 Extended Award in Bookkeeping
- Cabin Crew
- Documentary Film Making
- Games Design
- Games Design Part 2
- Garment Construction
- GCSE English and Functional Skills
- GCSE Mathematics
- Highlights of Contemporary Astronomy
- How to Design and Build a Website: An Introduction
- IELTS
- Intermediate Photography
- Introduction to Acting: Stage and Screen
- Introduction to Electronic Music Production with Ableton
- Introduction to Photoshop
- Journalism for Beginners
- Microsoft Office – Excel
- Microsoft Office – PowerPoint
- Microsoft Office – Word
- Music Video Production
- Preparation IELTS
- Public Speaking Skills
- Rigging for the Entertainment Industry
- Social Media Marketing for Beginners
- Textiles: Printed and Surface Pattern Design
- TV Presenting – An Introduction
- Ukulele for Beginners



Financial

Support

Finances shouldn't be a barrier to education. We're passionate about ensuring education is accessible to everyone so we offer a range of support packages to help finance your studies and support you during your course. (Please note, the range of support is different for students aged 16-18 and those aged over 19.)

Course fees

Your course fees, if any, will depend upon your personal circumstances such as your residential status (home or international), age, whether you are in receipt of benefits and/or seeking work and the course itself and how it is funded.

16-18 year olds

All our Entry to Level 3 courses are free to UK, EU and EEA* residents who are under 19 years old on the 31st August 2022. For some specific courses, you may be expected to contribute towards the cost of specialist materials and resources. However depending on the circumstances you may be eligible for

financial help from the College's Learner Support Fund. If you're eligible for any kind of financial support, you should apply for this as soon as you have been offered a place on a course. This will ensure the support is in place when you start.

Adults

If you are aged 19 or over on the 31st August 2022 you will normally be required to pay a course fee. However there are some exceptions for UK/EU or EEA* residents explained below.

What will the cost of my course include?

The cost of your course will include



tuition fees and examination fees where applicable. Where a course requires additional specialist materials there may be an additional cost. Some courses are cheaper than others because they are part funded by the government some of these courses may also attract concessionary fees for some people.

You may be eligible for a concession:

- You are aged 19-23 years old and are studying at the level of your chosen course for the first time. This applies to Level 1, 2 and 3 courses. Where appropriate, you will have no fees to pay apart from the cost of any specialist materials or equipment used

during your course. If you already have a Level 3 qualification or are over 23 years old, you will have a fee to pay. You can either pay the fee personally or apply for an Advanced Learner Loan.

- You are unemployed and in receipt of a 'work-related' benefit such as Job Seekers Allowance (JSA) or work-related Employment and Support Allowance (ESA) and you are seeking work. In such circumstances, you may have no fees to pay apart from the cost of any specialist materials or equipment used during your course, (if applicable).
- You are an asylum seeker in receipt of financial assistance (NASS) you may be eligible for concessionary fees.

Financial Support to help with childcare

The Care to Learn scheme can help with childcare costs while you study. For more information visit: **cwc.**

**ac.uk/student-support/
financial-support/
childcare**



Advanced Learner Loan

To be eligible for this loan, you need to have been living continuously in the UK for three years immediately before the start date of your course. You must also be undertaking a course of study at Level 3 or above, e.g. A levels, National Diploma/ Certificate. For more information, visit gov.uk/advanced-learner-loan



Advanced Learner Loan - Additional Support

If you are approved for the Advanced Learner Loan, you may also be eligible for support with childcare and financial support towards course-associated costs from the Advanced Learner Loan Bursary. You must be in receipt of a minimum of £300 Advanced Learner Loan to receive the Bursary.

Higher Education courses

If you are a home student, you may be eligible for a student loan covering all or part of your tuition fees. To find out more, and to apply, visit: gov.uk/student-finance



Short, Commercial and professional courses

For short, commercial and professional courses, you will be required to pay the full course fee.

*European Economic Area



Open Events

Whether you know exactly what you want to study or need to find out a little more before you decide, our open events provide the perfect opportunity to explore your options and find out what we can offer you.

Essential in choosing where and what to study, open events offer the ideal opportunity to:

- Discover our welcoming and supportive environment
- Get the lowdown on courses from staff and students
- Take a campus tour and try out our superb facilities
- Receive specialist advice on topics including finance, admissions, and student support
- Apply at the event and so much more.

From evenings to Saturdays, we hold open events throughout the year. Visit **cwc.ac.uk/openevents** to find out more and to register for one of our events.

Covid -19: moving forward

We will continue follow guidance from the Government, and will act in accordance to their advice. This information is subject to change. For the most up-to-date information, please check our website **cwc.ac.uk**



Student Support

We make every effort to ensure that you make a success of your time with us. That is why we offer student support and welfare services dedicated to providing you with careers guidance, additional learning support, personal and academic development, mental health support and more.

Our Student Advisors/Support Officers offer impartial advice and guidance on:

- Financial support for students: 16-19 Bursary, Care to Learn applications, Discretionary Learner Support Funds, 19+ Advanced Learner Loan Bursary Fund, HE Hardship Fund
- Financial support for help with childcare costs
- Referrals to Emergency Housing Advice and information
- Welfare benefits information and support
- Domestic violence - emergency advice and referrals to specialist support services
- Personal/emotional support and referrals to longer term support including the Mental Health Support Team at the College

- Sexual health signposting including issuing free condoms
- Period Poverty packs to young people

To contact an Advisor before you apply for a course, please email

studentadvice@cw.ac.uk and speak to a member of the team.

Supporting Looked after Children and Care Leavers

If you are a looked after child, a young person leaving care or a young person estranged from family please come and see one of our friendly Student Advisors/Support Officers. We can check that you are aware of the support available to you and have applied for the Nominated Bursary. We can also make contact with your social worker or Personal Advisor contact with your

Student Support



professional network will help us to help you to succeed on your course.

Young carer

We appreciate that studying and caring can be both difficult and challenging. If you are a young carer please speak to a Student Advisor/Support Officer.

Young parent

If you are a young parent please speak to a Student Advisor/Support Officer for support with applying for Care to Learn or once you have applied for Care to Learn. They will need to complete the Education part of the application.

Asylum seeker

If you are an Asylum Seeker on NASS support please speak to a Student Advisor/Support Officer. They can advise you on alternative support to help you on your course.

For further information, email:
studentadvice@cw.ac.uk

Mental health and wellbeing

The mental health and wellbeing of our students is our top priority. We take a practical approach in supporting and meeting the needs of all our students. If you're experiencing any form of mental health problems or are finding it challenging to cope at any time during your studies, we can support you.

**“Our
Safeguarding
team provides
additional
support to
help you
succeed.”**



We have a highly experienced mental health team to provide you with both practical and emotional support. We can provide support in making reasonable adjustments to meet your individual needs as well as respecting your confidentiality

Please visit cwc.ac.uk to complete the online referral form and a mental health advisor will contact you to arrange and appointment to assess your needs and to offer the appropriate support.

Careers advice

We're focused on your future career as much as you are. The Careers team offers high-quality impartial advice and guidance, to help you explore your options and choose the career path that's right for you. The team can help you with

university applications, apprenticeship applications, further study, employment, training opportunities, progression information and more.

Class tutors

All full-time students are allocated a class tutor who will meet with you on a regular basis to monitor your progress and attendance and assist with other matters. They can explain and advise you on College rules, your learning programme, assessments, examinations and all aspects of your course.

Induction

The College provides an Induction Programme for all students. This usually takes place at the start of a course. During your induction as well as finding out more about the course you have enrolled onto,

induction helps you get to know your peers and find out about the support services and facilities available to you at the College. You will also work with tutors to identify your target grades and agree actions to ensure you progress in your area of study.

If you join a course late, please speak to your tutor to find information relating to induction.

“Our team can provide you with advice and support on a wide range of mental health and wellbeing subjects.”

Student Support



Equal opportunities

We are committed to providing education and training for all, inclusive of ethnicity, gender, disability, religion, age or sexual orientation. Our Equal Opportunities Policy is monitored and reviewed regularly to make sure that we offer resources and learning support to empower every student to succeed, regardless of their background.

We host events, awareness days and workshops to challenge discrimination and celebrate diversity in our community and we regularly collect student feedback through surveys. We value your input in how to make UCG a more inclusive and vibrant place to study!

“Q+ is our support and allyship group for both students and staff”

LGBTQ+ support

City of Westminster College actively supports its lesbian, gay, bisexual and transgendered students and College staff members. We have a zero-tolerance approach towards homophobia, biphobia, transphobia and all forms of discrimination. Q+ is our support and allyship group for both students and staff – Q+ meets regularly during term for both social gatherings and active support. If you’d like more information, please contact: lgbtq@ucg.ac.uk

Additional Learning Support

Whether you have a learning difficulty/disability such as dyslexia and Asperger’s/Autism, need help with English or maths, have a physical disability, or a EHCP plan, or need support because English is not your first language, our specialist Additional Learning Support team can help you throughout your studies. Please be sure to put any learning needs on your application form so we can ensure the support is in place when you start your course.

For more information about the support available or to arrange a confidential pre-entry interview, contact the Additional Learning Support Team via email at: studentadvice@cw.ac.uk

“Here at City of Westminster College we have a dedicated team of staff that you can contact at any time.”

.....

Safeguarding

We are committed to ensuring all our learners are in a safe and secure environment. Here at CWC we have a dedicated team of staff that you can contact at any time no matter how big or small the matter that you wish to speak about.

If a student has a concern about themselves or another student, please contact **safeguarding@ucg.ac.uk**

Togetherall

CWC students going through a tough time can access free online support with Togetherall. Whether you're struggling to sleep, feeling low, stressed or unable to cope, Togetherall can help you get support, take control and feel better.

Our students have access to a 24/7 online global community and professional support from trained professionals. Togetherall provides a safe space online to get things off your chest, explore your feelings, get creative and learn how to self-manage your mental health and wellbeing.



Student Discount

TOTUM is the #1 student discount card giving you access to huge offers on food and essentials, technology, travel and home delivery. Plus fashion, beauty and a whole lot more. TOTUM puts all the best student coupons, vouchers and discounts right where you want them - in your pocket. Once you have enrolled with us, visit totum.com to prove your student status and buy your card!



Student

MATTERS



As well as reaching your full potential in your studies, we want you to enjoy your time with us and make memories you'll cherish for life. We've developed a fun-packed programme of activities for you to get involved in outside of class. From thrilling themed days, social activities and events on-campus to our vibrant Freshers' Fair, making your voice heard and cultural and sports teams, we have plenty of ways for you to get stuck into College life.

Student activity programme

The Student Activity Programme consists of a range of social activities available to all our students. Activities take place on college campuses as well as external sports and leisure venues. Getting involved in the Programme is a great way to make friends and pick up new skills. Depending on your age, you can join activities free-of-charge or at a discount. To find out more, call: **020 7258 2900**

Student voice

We take our students' views very seriously and are committed to working in partnership with them, to celebrate their successes and to continuously improve what we offer.

If you want to make a difference to the learner experience, you can get involved by becoming a course representative, a student council member and/or a student ambassador. To find out more and how to join, contact the student voice



Officer located in the Student Services office at the Paddington campus.

Student council and student governors

Student governors are elected from the student council and sit on the Governing Body of the College, making sure that the views and voices of students are heard. They work closely with the governors and senior staff to help improve the quality of education and teaching. It's your Student Council – and that means you can take an active part in shaping it.

Course representatives

Each course elects course representatives. They are invited to attend meetings to discuss their opinions, offer suggestions and give feedback on how to improve their course.

Student ambassadors

Becoming a student ambassador is a fantastic way to make new friends and meet people outside of your course as well as gain skills that go beyond your qualifications.

As a student ambassador, you'll have the opportunity to get involved with many different types of work including open events, fairs, community projects and paid work during the College's enrolment period, allowing you to develop skills you already have as well as gain new ones.



REAL-LIFE

READY

Preparing you for the world-of-work

Success in the world-of-work isn't just about having the right skills, knowledge and qualifications – it's also about attitude and the 'soft skills' that make you employable. We are committed to helping you develop on a personal, social, and professional level. We do this by embedding key employability and enterprise skills in everything we do. We also work with employers to provide you with opportunities to get the skills you need in the workplace.



SUCCESSFUL STUDENTS

- Decision making
- Problem solving
- Evaluation skills
- Critical thinking

EFFECTIVE CONTRIBUTORS

- Teamwork
- Communication
- Managing conflict
- Working with different people

CONFIDENT INDIVIDUALS

- CV writing
- Job search
- Interview skills
- Presentation skills

RESPONSIBLE CITIZENS

- Planning for the future
- Mentoring and helping others
- Showing integrity and accountability

Supporting your employability

The College offers UCAS and CV workshops, interview practise and job preparation. We have a dedicated Careers team who work closely with teaching staff and students. The College also has an Employer Engagement and Business Development Team who work with employers and businesses at both a local and national level.

Apprenticeships

We have strong links with Apprenticeship agencies to ensure that students who want to find apprenticeships are supported to make informed choices about their career and employment opportunities.

Local and national employer links

We work closely with a range of national businesses such as Age UK,

Boots, the British Heart Foundation, Cutting Crew, GAP, Hobbs, McAleer and Rushe, M&S, the Paddington Partnerships, Sisk, and Wates and more.

Making learning relevant to industry

We partner with employers to ensure our vocational provision is up-to-date and relevant, while teaching staff actively make links to employment in their teaching and assessment. We also provide visits to different work environments including hotels, construction sites and banks.

Work experience

We aim to provide all our 16-18 year old students with a work experience package - in many cases this will include work experience and/or a shadowing placement.

We also offer the Super WEX programme for Level 2 and 3 learners. It combines classroom learning with 315 hours (40-50 days) of meaningful 'on-the-job' experience.

INDEX

A

A Levels	30
Accounting	40
Additional Learning Support	104
Apprenticeships	28
Applications - How to apply	16
Art, Design and Photography	58

B

Back to work	38
Bilal Bobat (Assistant Principal)	57
Building Services	48
Business	40

C

Campuses	6-9
Choosing the right course level	13
Civil Engineering	50
Course Levels	13
Courses Explained	18,19
Course Representatives	107
Construction	46
Construction Skills Centre	9
Course guide navigator	20
Creative Industries	56

D

Deputy Principal's Welcome	3
Digital Industries	56

E

Engineering	52
English	68
English as a Foreign Language (EFL)	84
English for Speakers of Other Languages	86
ESOL	86
Employability (Work Experience)	96,97
Equal Opportunities	104

F

Facilities	11
Financial Support	98
Functional Skills	68

G

GCSEs and Functional Skills	70
Group Principal's Welcome	2

H

Health and Social Care	74
Health, Wellbeing and Care	72
How to apply	16

I

ICT	60
Induction	103

K

King's Cross campus	9
---------------------	---

L

Lifelong Learning	82
-------------------	----

M

Maida Vale campus	8
Mark Stacey (Assistant Principal)	69
Maths	68
Media	62
Mental Health and Wellbeing	101
Motor Vehicle Maintenance Repair	54

N

Nick Clarke (Assistant Principal)	41
Nicola McClean (Assistant Principal)	89

O

Open Events	100
Our campuses	6

P

Paddington Green campus information	7
Performing Arts	64
Phyllis Scoon (Assistant Principal)	83
Principal's Welcome	2
Public Services	76

Q

Qualifications explained	12
---------------------------------	-----------

R

Raising the bar	4
------------------------	----------

S

Safeguarding	102
Sandip Charlton (Assistant Principal)	73
Science	34
Short Courses	96
Sound and Music	66
Sport	78
Student ambassadors	107
Student council	107
Student discount	106
Student Support	101
Student voice	107
Supported Learning	88

T

Teacher Training	92
The Cockpit theatre	7
Togetherall	105
Travel and Tourism	80

V

Vito Martin (Assistant Principal)	47
--	-----------

W

Why you should study at CWC	4
Workforce development courses	39

Y

Your study programme	14
Young Carer	102
Young Parent	102



Serving a **HIRE PURPOSE**

The unique and multi-functional facilities at City of Westminster College lend themselves to many different types of events. We host board meetings, networking events, general industry events, film and photo shoots, celebration events and regular leisure club.

Open for all bookings.

Superb spaces for hire

Paddington Green campus is City of Westminster College's £102 million flagship campus and has won prestigious RIBA and NLA New London Architecture awards since it opened in January 2011. Many of its superb spaces are available for short and long-term hire including the Sarah Siddons Theatre, Sports Hall, Dance Studio and a wide range of teaching and presentation rooms.

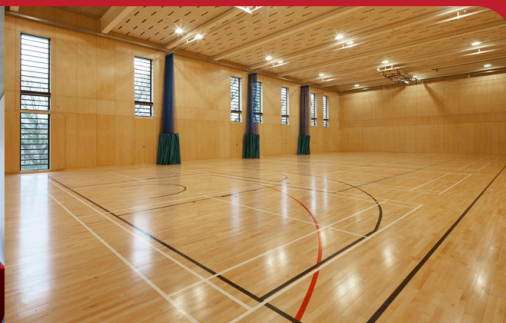
Spaces include:

- The Atrium
- The Boardroom Suite
- Meeting Tooms and Pods
- Roof Terrace
- Sarah Siddons Theatre
- Sports Hall and Gym
- Dance Studio
- Workshops
- The Cockpit

In-house catering

As well as providing breathtaking central London surroundings for your event, we can assist with its organisation too. Our in-house caterers Caterlink are able to provide anything from tea /coffee and biscuits to champagne and canapés. Our extensive contacts book means we can also provide guidance on sourcing additional specialist suppliers such as cake makers and lighting and sound hire companies.

For more information on any of the spaces available for hire, please contact Events and Lettings Manager via: events@cw.ac.uk



**City of Westminster
College**



United Colleges Group comprises of
City of Westminster College and
the College of North West London.

The partnership means:

- Increased range of learning facilities
for you to use
 - More opportunities for
out-of-class activities
 - We can devote more resources
directly to teaching, learning and
student support services

To find out more, please visit:

cwc.ac.uk

or our sister college website:

cnwl.ac.uk



Paddington Green Campus, Paddington Green, London, W2 1NB

Maida Vale Campus, 129 Elgin Ave, London W9 2NR

The Cockpit, Gateforth Street, London, NW8 8EH

cwc.ac.uk 020 7723 8826



ucg.ac.uk • cwc.ac.uk • cnwl.ac.uk